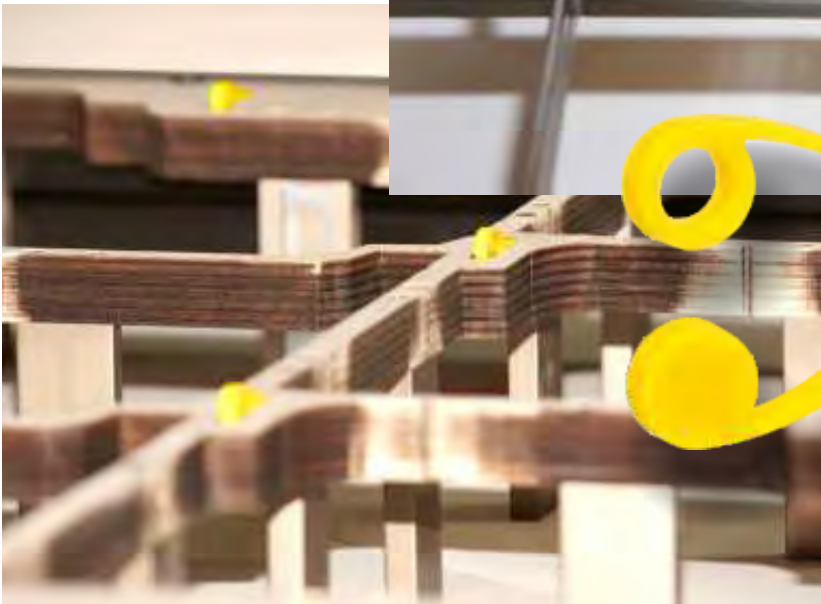


COMPASS

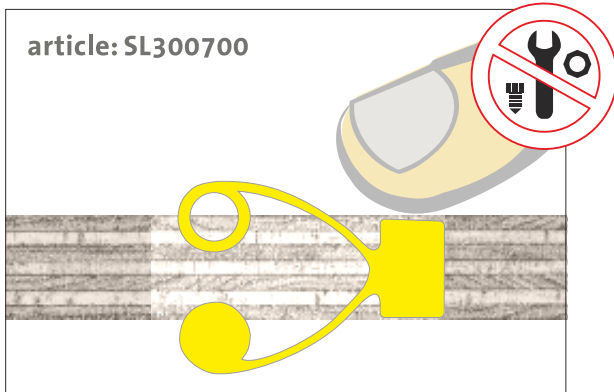
sheet'lift^{3D}



sheet'lift

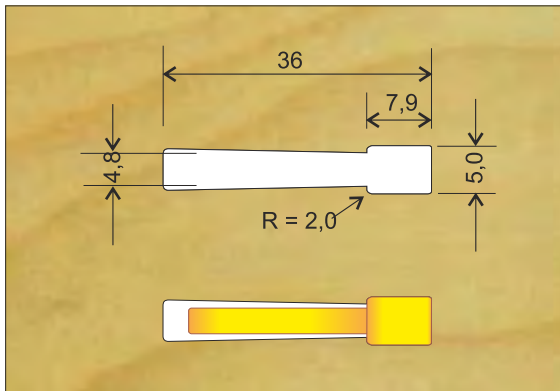
Either way - the right choice.

failure-free blanking using **sheet'lift**



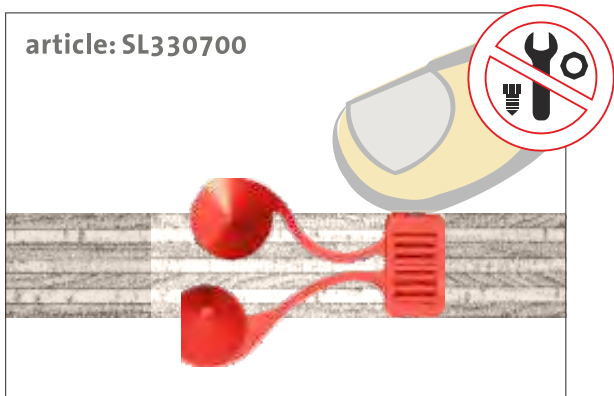
sheet'lift

- ▶ slimline version
- ▶ height-adjustable (by operator too)
- ▶ just press into plywood cut-out



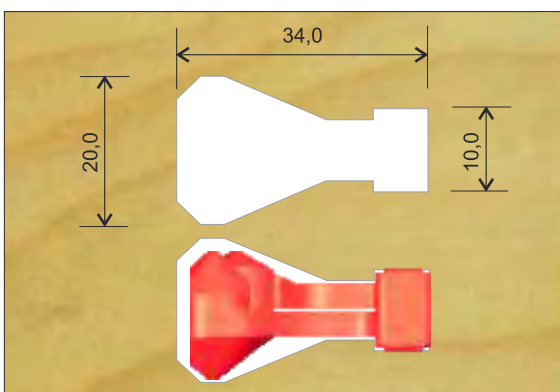
sheet'lift

- ▶ adapted cut-out
- ▶ thanks to rounded-off edges suitable for milled forms as well sheet'lift 3D



sheet'lift^{3D}

- ▶ wide version
- ▶ height-adjustable (by operator too)
- ▶ softer spring action
- ▶ just press into plywood cut-out



sheet'lift^{3D}

- ▶ adapted cut-out
- ▶ thanks to rounded-off edges suitable for milled forms as well

